



1 true health
CARE MANAGEMENT

Virtual First Preventative Care through delightful clinical services and intelligent software.

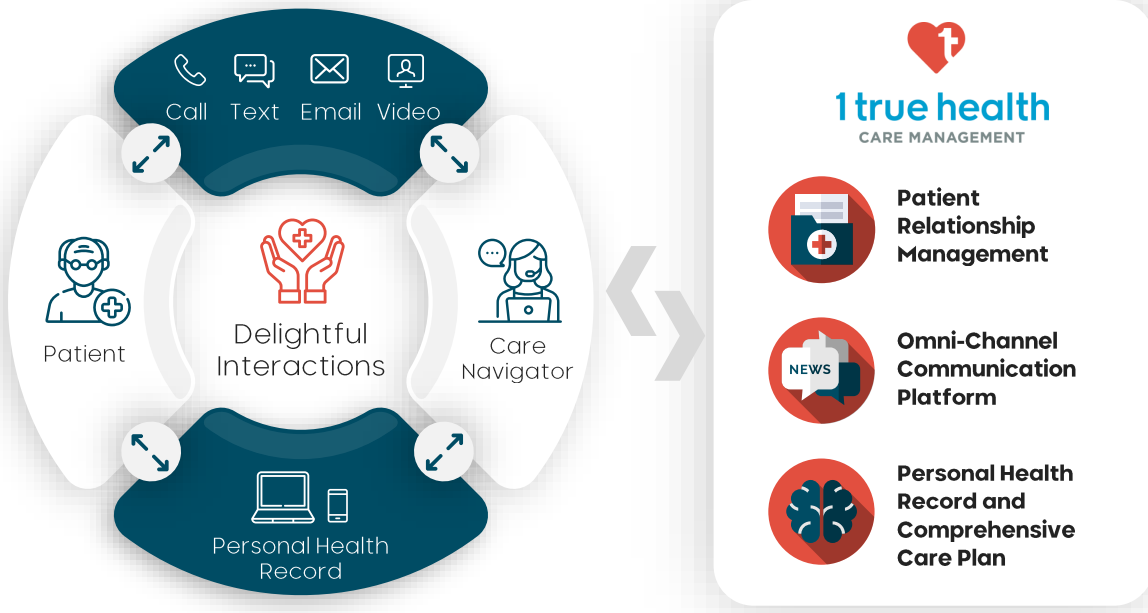
Click [here](#) for a video presentation on this opportunity.

Almost \$4T spent annually on chronic and acute diseases

Yet, for the 43 Million Americans on Medicare with two or more chronic conditions, actually managing them is a pain. Ineffective checkups, poor coordination, limited patient education, and even medication errors contribute to patient and caretaker headaches.

1 True Health: End to end tech-enabled clinical services

We offer a dedicated Care Navigator who uses our intelligent software to engage the patient and provide an actionable care plan. Navigators then manage the efforts of providers and caregivers while leading ongoing, impactful conversations.



1TH is delivering Chronic Care Management (CCM), Remote Patient Monitoring (RPM) and Transitional Care Management (TCM) on behalf of Clinical Practices, Hospitals, and Senior Living Communities

1TH's technology platform and staff are able to serve up to 60,000 patients per month on a 24/7 basis.

Closing a \$2.25M Priced Equity Round to grow market share

Founded by health technology experts each with multiple exits, we are serving patients and are in a rapid growth mode across the U.S.

\$3.7 T/yr

Spent managing:

- Diabetes
- Cognitive
- Cancer
- Arthritis
- Cardio
- Obesity



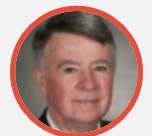
Shawn Smith
CEO & Co-Founder

35+ years in healthcare corporate ops, sales, marketing, and biz dev



Charles Owen, MD
CMO & Co-Founder

40+ years in Emergency Medicine and 30+ years in medical informatics and multiple successful exits



Jerry Scott
Exec Advisor & Co-Founder

Founder of multiple Healthcare IT companies w/ successful exits